

**RWE Renewables UK Dogger Bank
South (West) Limited**

**RWE Renewables UK Dogger Bank
South (East) Limited**

Dogger Bank South Offshore Wind Farms

Special Category Land Plan (Revision 2)

Volume 2

Pre-Examination Procedural Deadline

October 2024

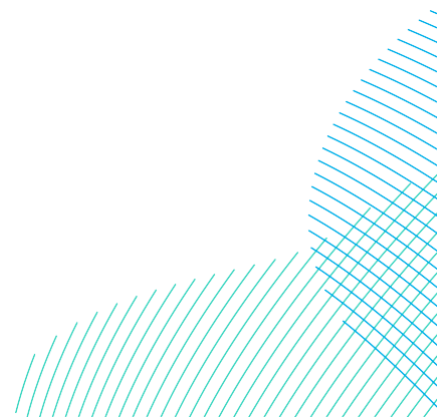
Application Reference: 2.8

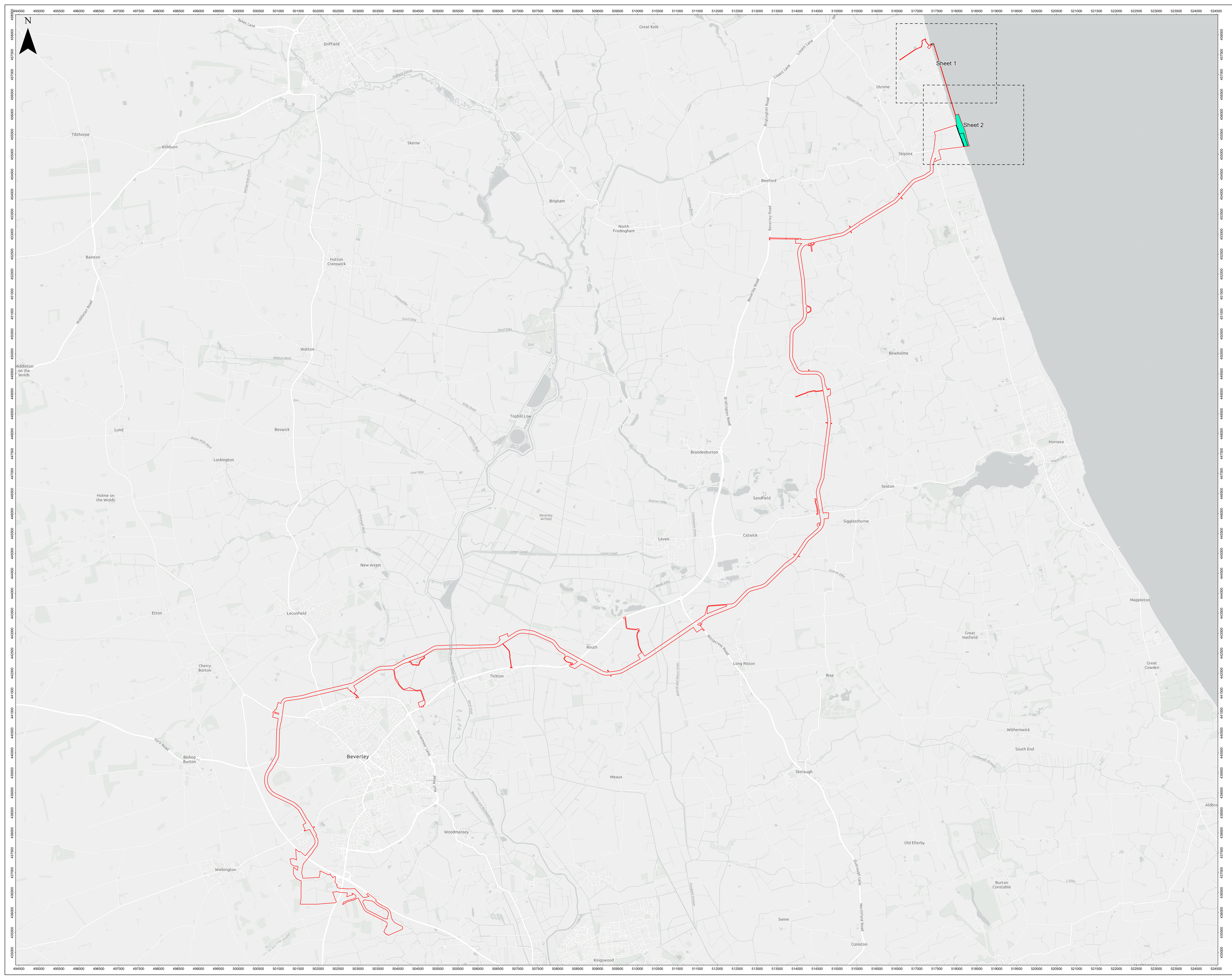
APFP Regulation: 5(2)(i)(iv)

Revision: 02

Company:	RWE Renewables UK Dogger Bank South (West) Limited and RWE Renewables UK Dogger Bank South (East) Limited	Asset:	Development		
Project:	Dogger Bank South Offshore Wind Farms	Sub Project/Package:	Consents		
Document Title or Description:	Special Category Land Plan (Revision 2)				
Document Number:	005028747-02	Contractor Reference Number:	N/A		
<p><i>COPYRIGHT © RWE Renewables UK Dogger Bank South (West) Limited and RWE Renewables UK Dogger Bank South (East) Limited, 2024. All rights reserved.</i></p> <p><i>This document is supplied on and subject to the terms and conditions of the Contractual Agreement relating to this work, under which this document has been supplied, in particular:</i></p> <p>LIABILITY</p> <p><i>In preparation of this document RWE Renewables UK Dogger Bank South (West) Limited and RWE Renewables UK Dogger Bank South (East) Limited has made reasonable efforts to ensure that the content is accurate, up to date and complete for the purpose for which it was contracted. RWE Renewables UK Dogger Bank South (West) Limited and RWE Renewables UK Dogger Bank South (East) Limited makes no warranty as to the accuracy or completeness of material supplied by the client or their agent.</i></p> <p><i>Other than any liability on RWE Renewables UK Dogger Bank South (West) Limited and RWE Renewables UK Dogger Bank South (East) Limited detailed in the contracts between the parties for this work RWE Renewables UK Dogger Bank South (West) Limited and RWE Renewables UK Dogger Bank South (East) Limited shall have no liability for any loss, damage, injury, claim, expense, cost or other consequence arising as a result of use or reliance upon any information contained in or omitted from this document.</i></p> <p><i>Any persons intending to use this document should satisfy themselves as to its applicability for their intended purpose.</i></p> <p><i>The user of this document has the obligation to employ safe working practices for any activities referred to and to adopt specific practices appropriate to local conditions.</i></p>					
Rev No.	Date	Status/Reason for Issue	Author	Checked by	Approved by
01	June 2024	Final for DCO Application	DM	RWE	RWE
02	October 2024	Submission at Pre-Examination Procedural Deadline	DM	RWE	RWE

Revision Change Log			
Rev No.	Page	Section	Description
01	N/A	N/A	Submitted for DCO Application
02	4 to 6	N/A	The Special Category Land Plan has been updated, as requested in the Section 55 checklist from the Planning Inspectorate, to provide improved clarity by adding additional road names in bold type to make roads more easily identifiable in line with the descriptions in the Book of Reference





LEGEND
 Order Limits
 Open Space
 Sheet Boundary

MAP NOTES / DATA SOURCES:
 Esri, UK, Esri, TomTom, Garmin, FourSquare, GeoTechnologies, Inc., METRASA, USGS, Contains OS data © Crown Copyright and Geodata © 2023
 Contains data from OS Zoomstack
 Not to be used for Navigation.

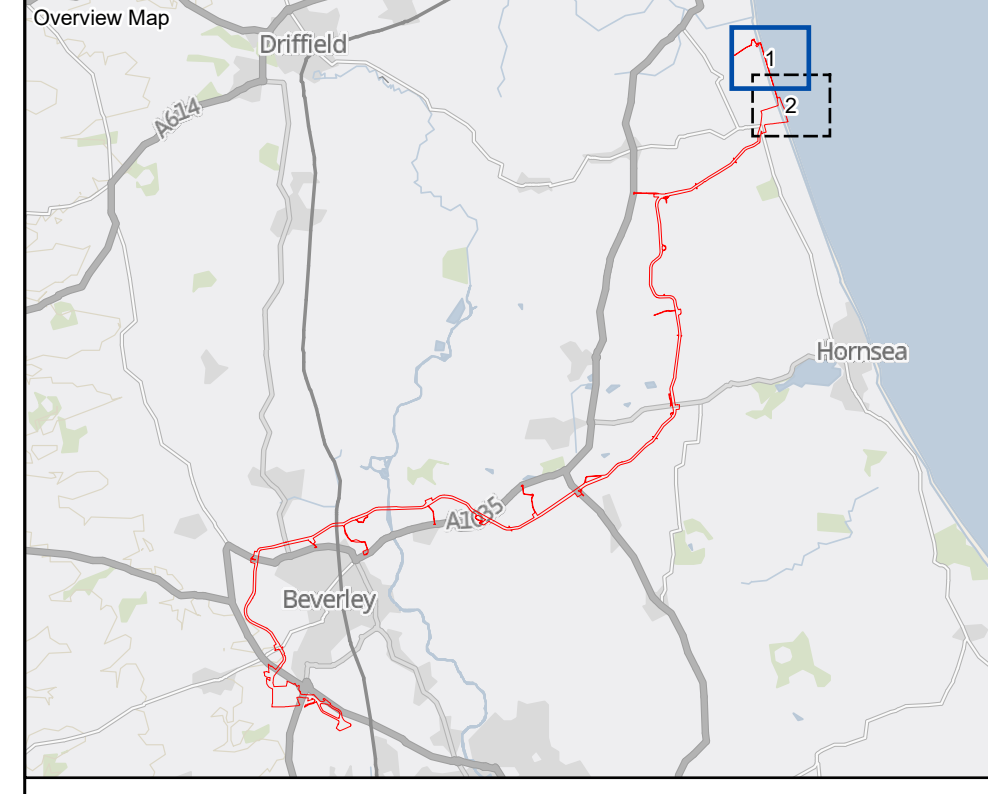
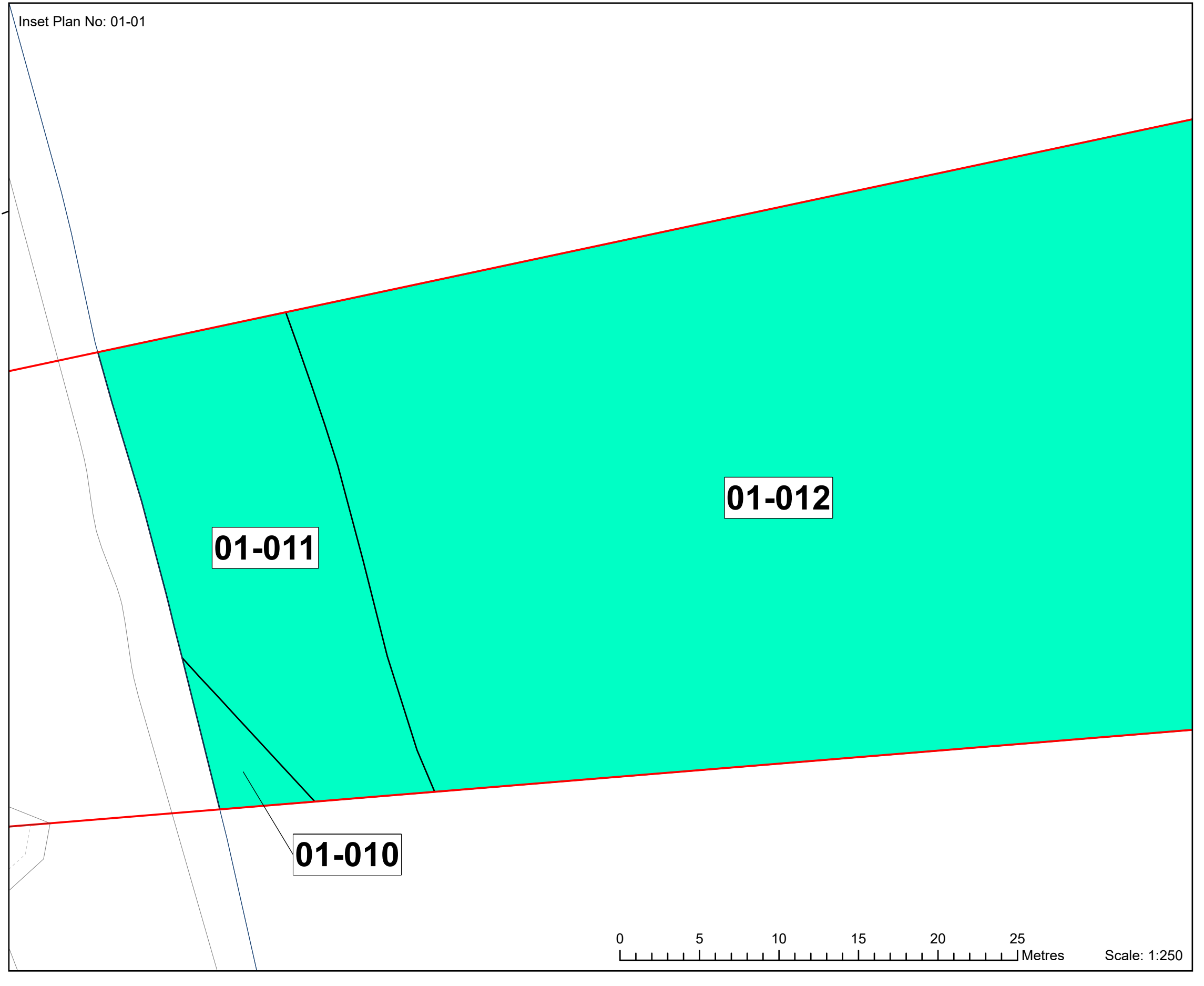
PROJECT TITLE
Dogger Bank South

DRAWING TITLE
Special Category Land Plans

DRAWING NUMBER: 005028747-01 **PAGE NUMBER: Key Plan**

REV	DATE	REMARKS	DRAW	CHEK	APRD
01	June 2024	Final for DCO Application	PA	IM	GH
02	October 2024	Final for DCO Application	PA	IMPR	GH

0 0.25 0.7 1.05 1.4 Km
 0 0.15 0.3 0.45 0.8 Miles



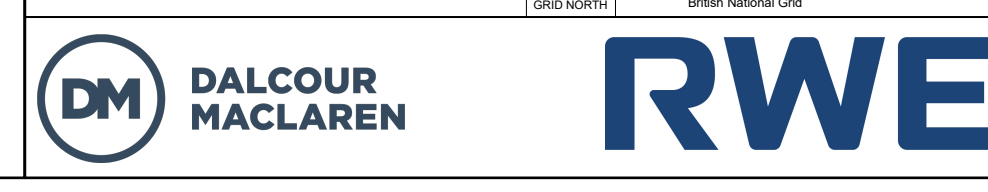
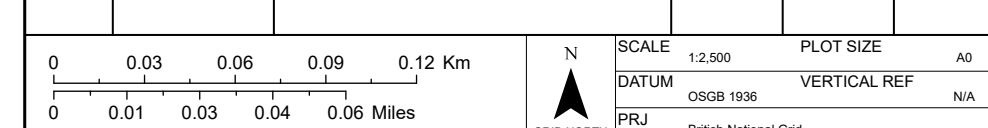
- LEGEND**
- Order Limits
 - Open Space
 - Sheet Boundary
 - Mean High Water Line
 - Mean Low Water Line

MAP NOTES / DATA SOURCES:
 © Crown copyright [and database rights] (2024) license number 100042124

Not to be used for Navigation.

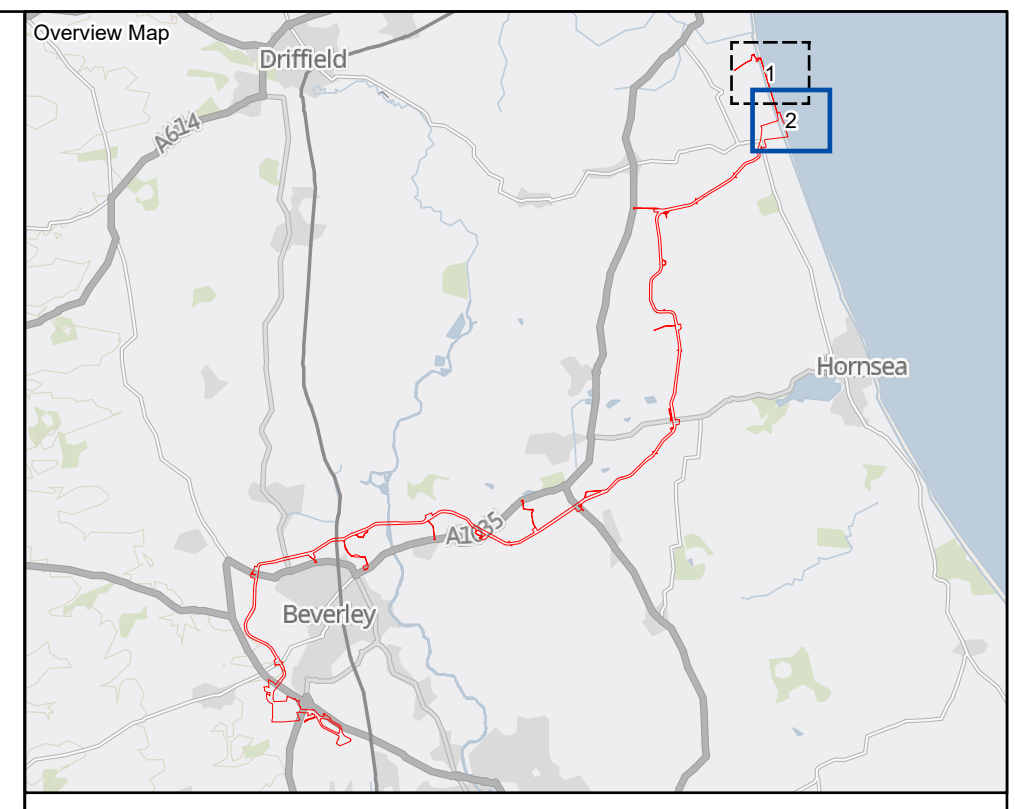
PROJECT TITLE **Dogger Bank South**
 DRAWING TITLE **Special Category Land Plans**

DRAWING NUMBER: 005028747-01		PAGE NUMBER: 1 of 2			
Application Reference: 2.8 / APPP Regulations: SC20(viv)					
REV	DATE	REMARKS	DRAW	CHEK	APRD
01	June 2024	Final for DCO Application	PA	IM	GH
02	October 2024	Final for DCO Application	PA	IMPR	GH

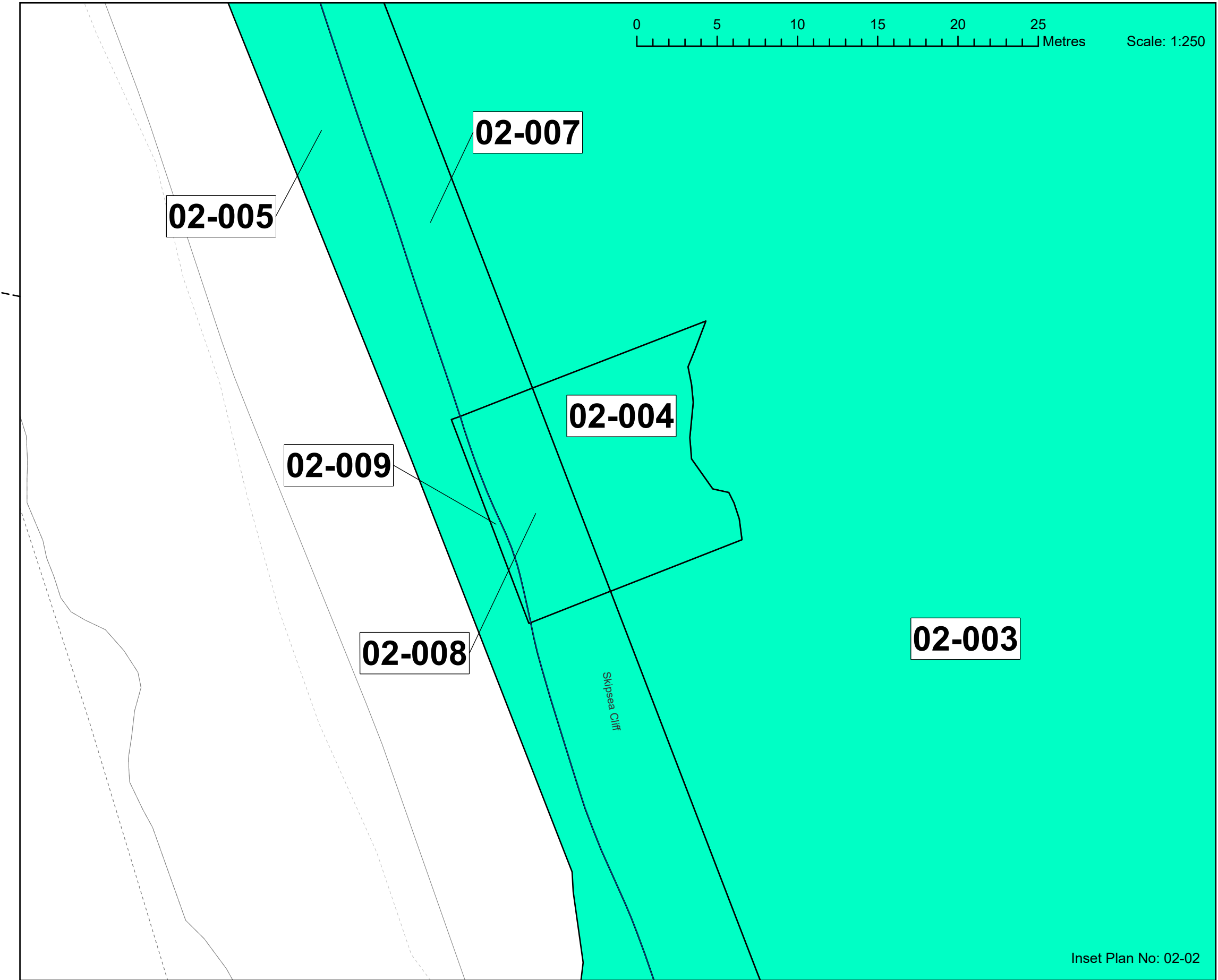
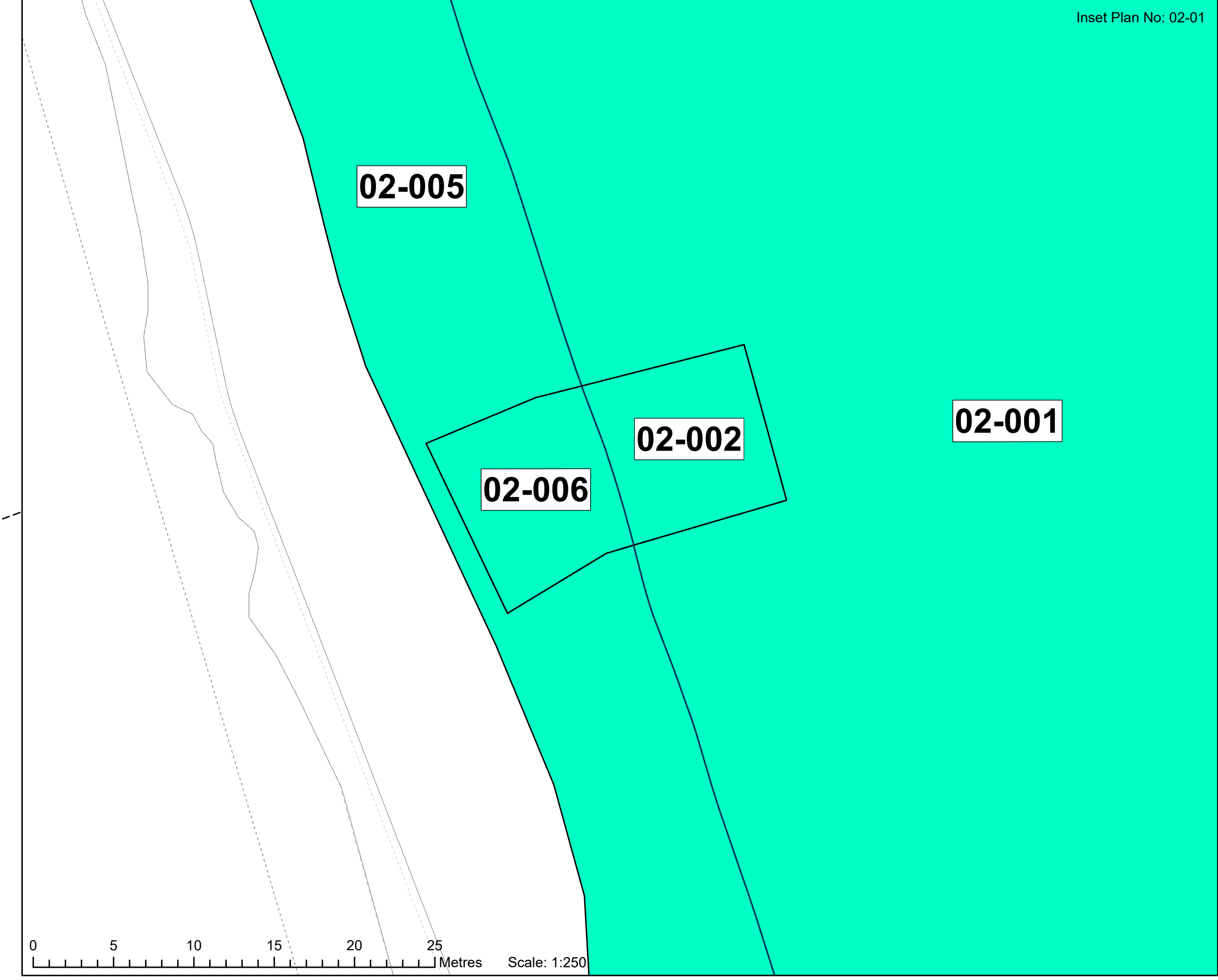


Continue on Sheet 2

Continue on Sheet 2



- LEGEND**
- Order Limits
 - Open Space
 - Sheet Boundary
 - Mean High Water Line
 - Mean Low Water Line



MAP NOTES / DATA SOURCES:
 © Crown copyright [and database rights] (2024) license number 100042124

Not to be used for Navigation.

PROJECT TITLE
 Dogger Bank South
DRAWING TITLE
 Special Category Land Plans

DRAWING NUMBER: 005028747-01		PAGE NUMBER: 2 of 2			
Application Reference: 2.8 / APPP Regulations: SC20(hv)					
REV	DATE	REMARKS	DRAW	CHEK	APRD
01	June 2024	Final for DCO Application	PA	IM	GH
02	October 2024	Final for DCO Application	PA	IMPR	GH

